

Gillem Logistics Center

Building 700 | 169,520 s.f divisible



0 Anvil Block Rd, Forest Park GA | Delivery Q4 22

Leasing Contact:

Matt Davis

Matt@robinsonweeks.com

C: 404.429.7464

Developed by:

ROBINSON | WEEKS
PARTNERS

Gillem Logistics Center

Building 700 | 169,520 s.f divisible

Building Specifications

General

- 169,520 Available
- 168 auto parking spots
- 35 trailer parking spots
- 35 dock high doors (9'x10')
- 60' Speed Bays
- Total depth of 260'
- Total width of 652'
- 32' clear height

- 6" Ductilcrete Slab
- Two (2) drive-in doors (12'x14')

Roofing

- Roof is 45mil mechanically attached white TPO membrane

Fire Protection

- K-17 ESFR sprinkler system
- 1,500gpm at 80psi fire pump

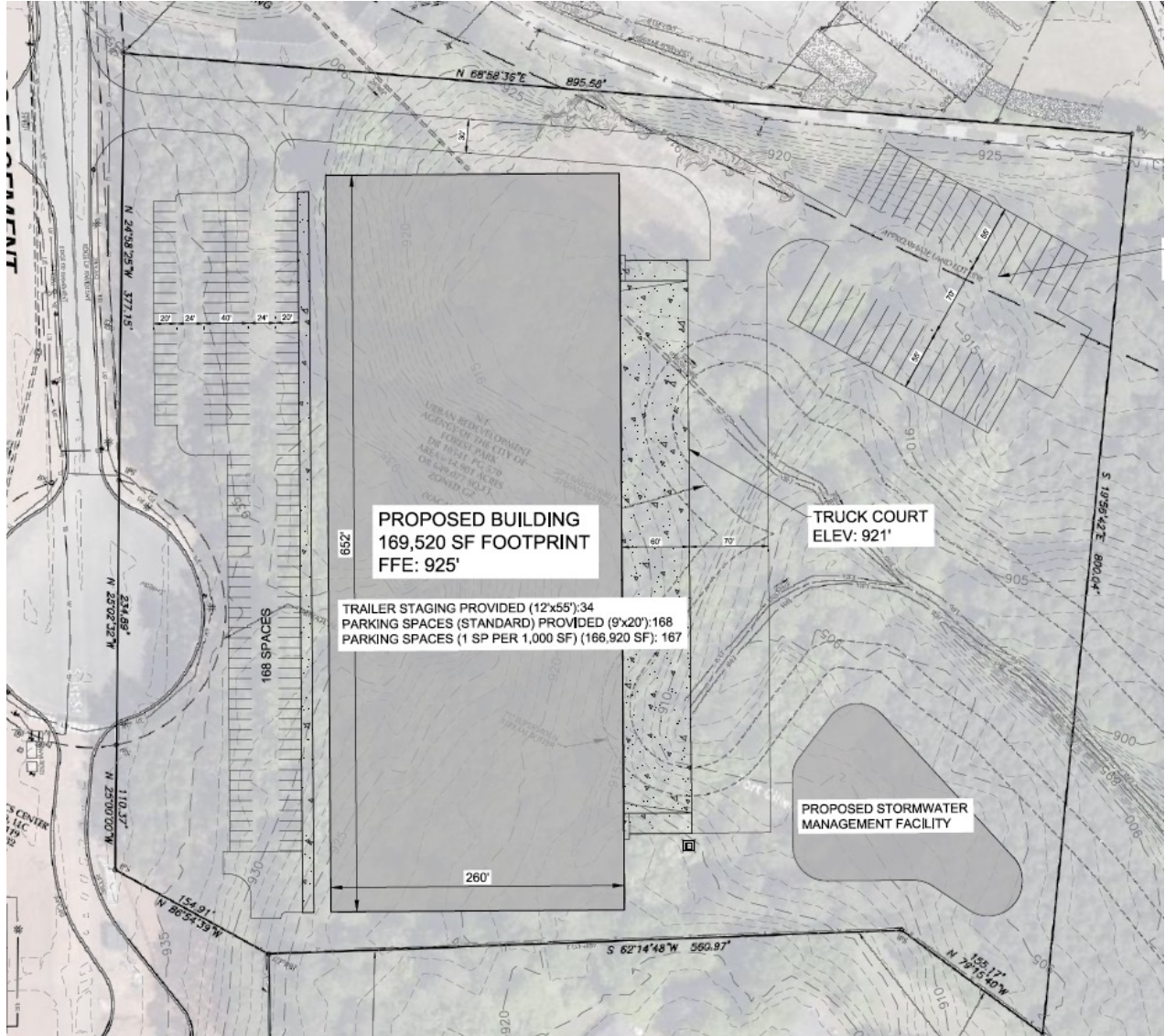
Rendering



Gillem Logistics Center

Building 700 | 169,520 s.f divisible

Site Plan



Incentives

Tier 1 Tax Credit Overview

Summary:

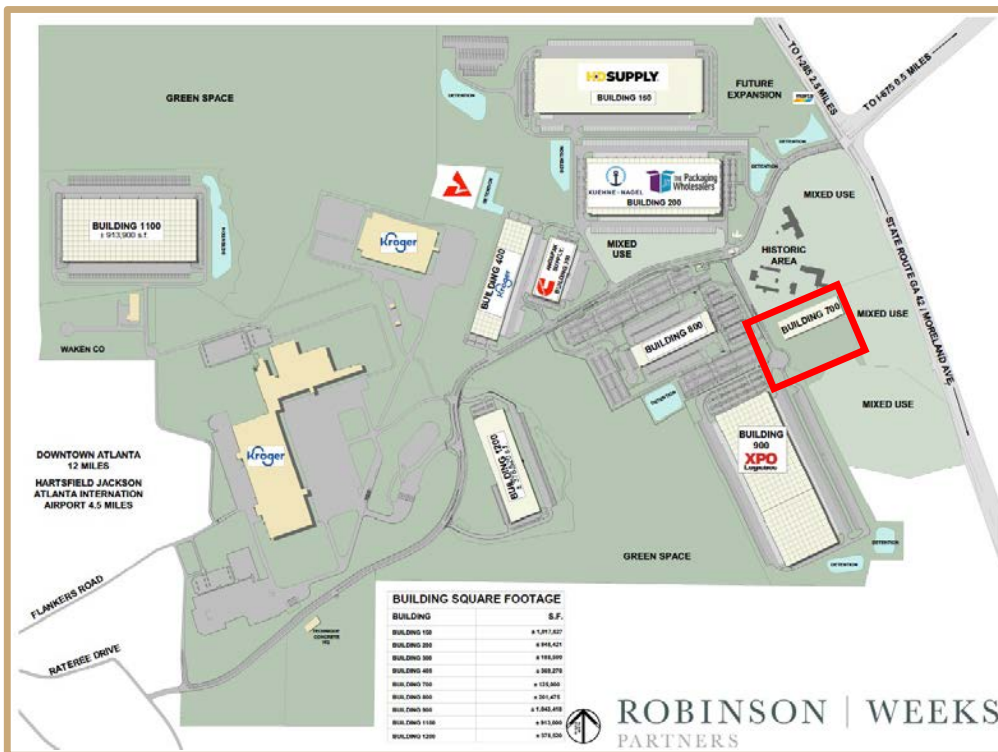
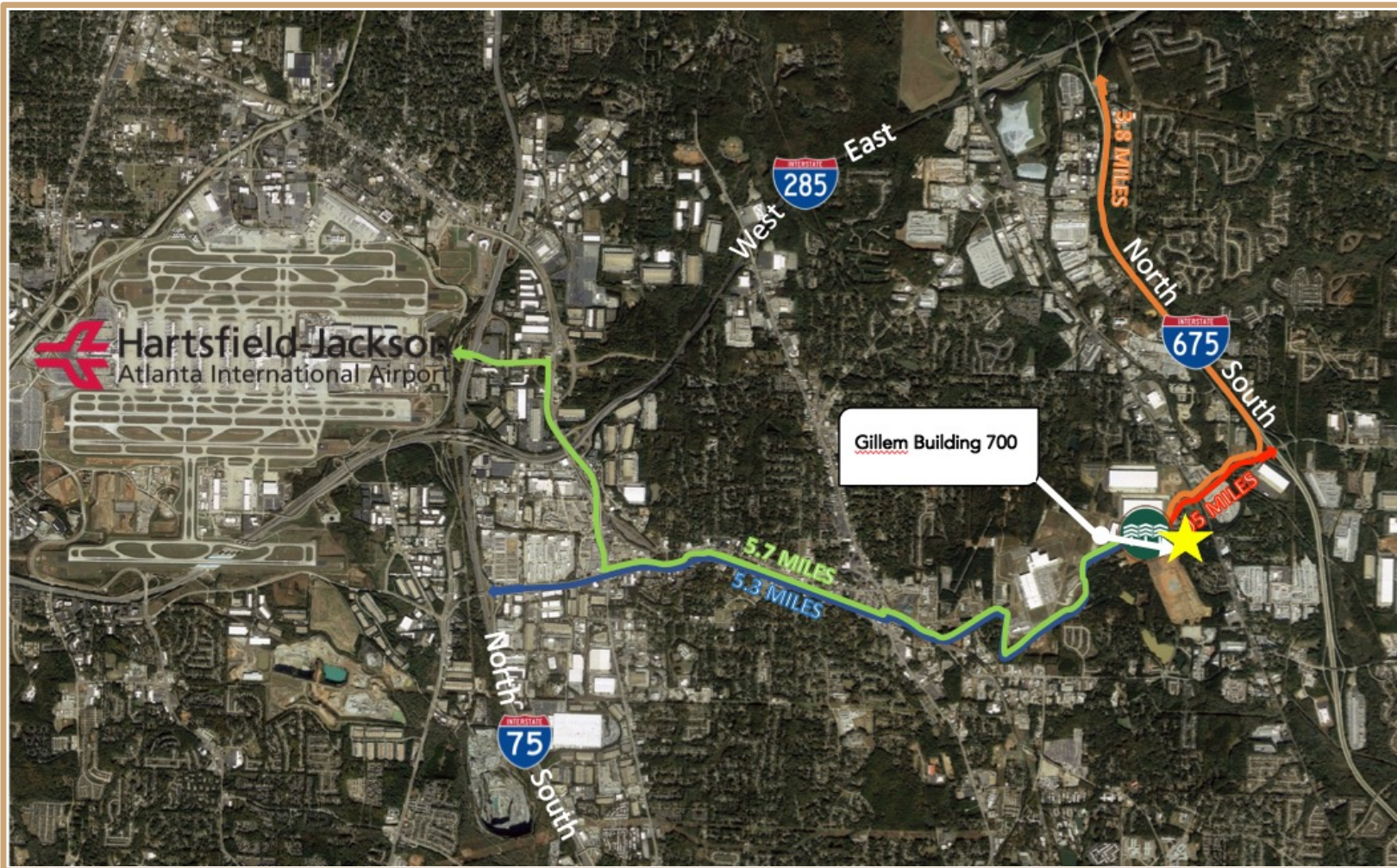
Gillem-700 lies within the boundaries of a Tier 1 district designated by the Georgia Department of Community affairs. This qualifies users to take advantage of a job creation tax credit equal to \$4000 per employee for up to 5 years. This Job Tax Credit is taken against the business's Georgia income tax liability and payroll withholding tax.

Example:

Tax savings with 100 employees
Year 1: $\$4000 \times 100 = \$400,000$
Total: $\$400,000 \times 5 = \$2,000,000$

Other Incentives Available

- Highly robust **tax abatement** program
- Foreign Trade Zone (FTZ)
- 100% Freeport Exemption
- State Incentives



Desirable Logistics Corridor

Hartsfield Jackson	5.7 Miles
I-675	.05 Miles
I-285	3.8 Miles
I-75	5.3 Miles
I-85	11.5 Miles
I-20	10.3 Miles

Leasing Contact:

Matt Davis

Matt@robinsonweeks.com

C: 404.429.7464